

Bottles, jars, & aluminum cans must be liquid free and they must be separated by each item.

Do not place in bags, crush, or break glass.

Place recycling bin where it will be seen easily - use only blue/green recycling bins.

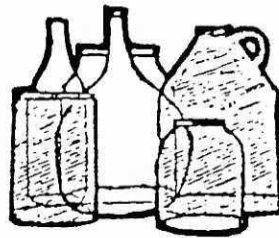
Recycling is Easy! Just Follow the Steps!

ONLY FOOD and BEVERAGE CONTAINERS

HOW TO PREPARE YOUR MATERIALS

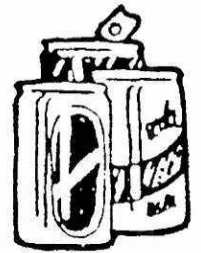
GLASS - CLEAR, BROWN, GREEN

1. Rinse - labels can stay on
2. Dispose of all lids & caps
3. No window glass, light bulbs, blue glass, pyrex or ceramics
4. No **DRINKING** glasses
5. Place in container
(Do Not Break)
6. No Plastic Bags
7. All glass must be container glass
not window glass



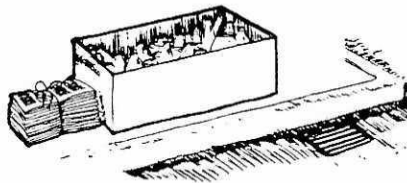
ALUMINUM BEVERAGE CANS

1. Rinse
2. Flatten, if desired, to save space
3. Place in container
4. No soup or vegetable cans
5. No Plastic Bags
6. Dispose of all lids & caps



NEWSPAPER

1. In bundles and untied plastic bags
2. **MUST BE DRY** (will be rejected if not)
3. 5 to 10 lb. bundles only



Note: The special container provided for your recyclables remains the property of the City and must remain at each house or apartment. All houses or residents must call the City or ELK WASTE SERVICES for a container.

**Do Not Bag Glass and Aluminum.
No plastic bags please!**

COLLECTION DAY

Place container at curbside by 7:00 A.M.